



UMTA & UTF: NATIONAL WORKSHOP GENERIC V/S CITY SPECIFIC UTF

Agenda

- **POTENTIAL SOURCES OF FUNDS**
- **PRIORITIZED UTILIZATION OF FUNDS**
- **FUND MANAGEMENT DIVISION**

Common consensus that UMTA would have its own dedicated fund in the form of UTF

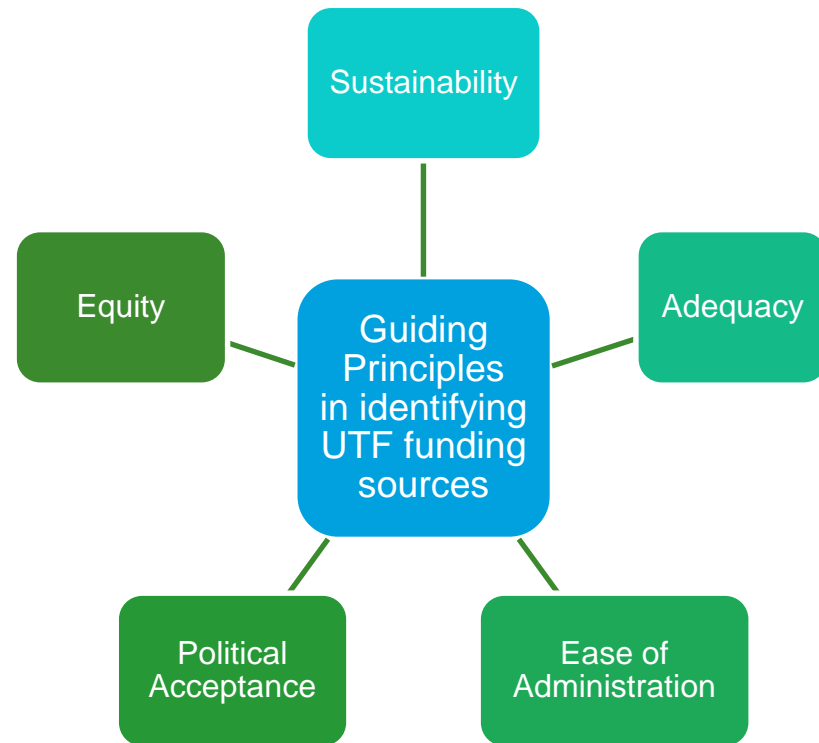
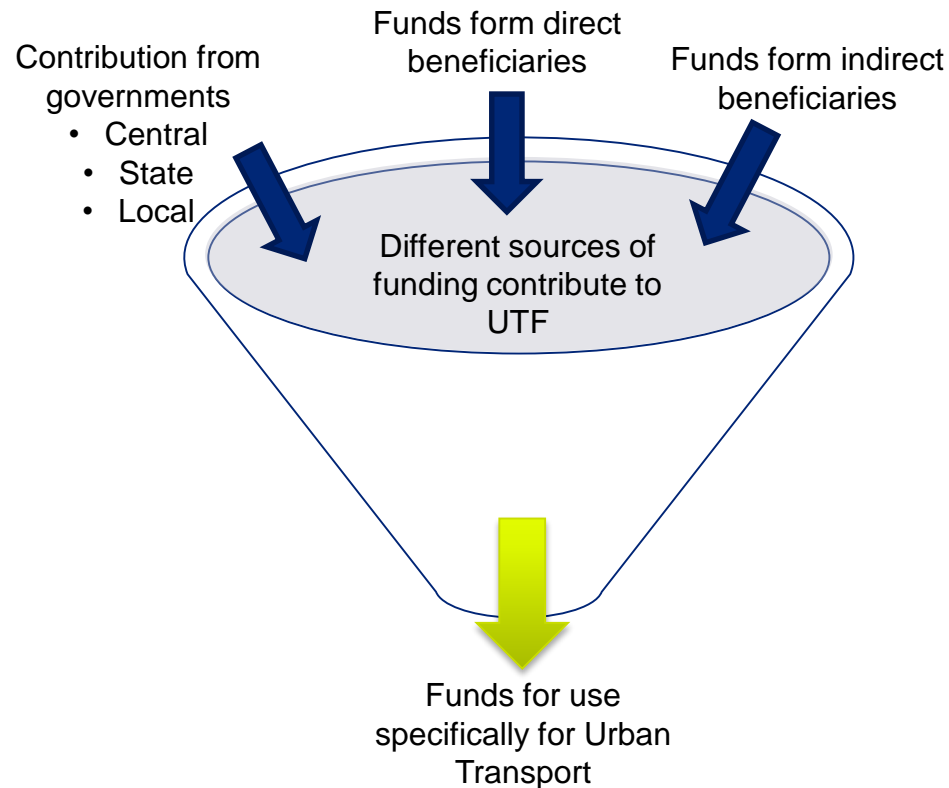
- A number of dedicated sources of funding proposed, in addition to central and state budgetary allocations
- Apart from conventional sources, innovative sources of funding also to be tapped, e.g.: betterment levies, tax on employers
- UTF to be managed by a dedicated division – Fund Management Division
- Overall agreement on utilization avenues of UTF, with priority being given to UMTA's operations
- UMTA to have clearly defined accounting policies for efficient fund management

DEDICATED UTF PROPOSED FOR UMTA, WITH FUNDING SOURCES AND UTILIZATION AVENUES CLEARLY DEFINED

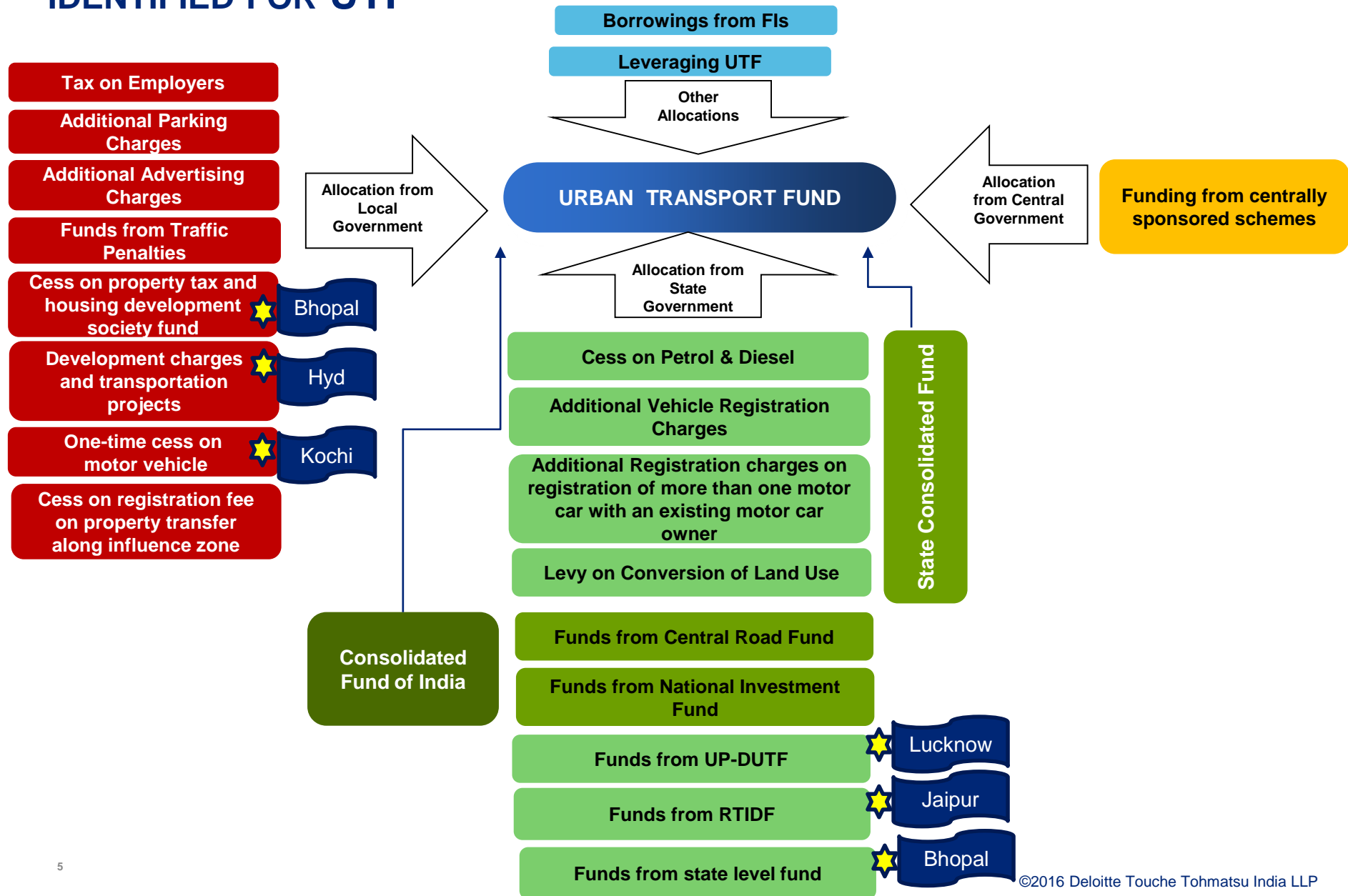
SOURCES

Evaluated on

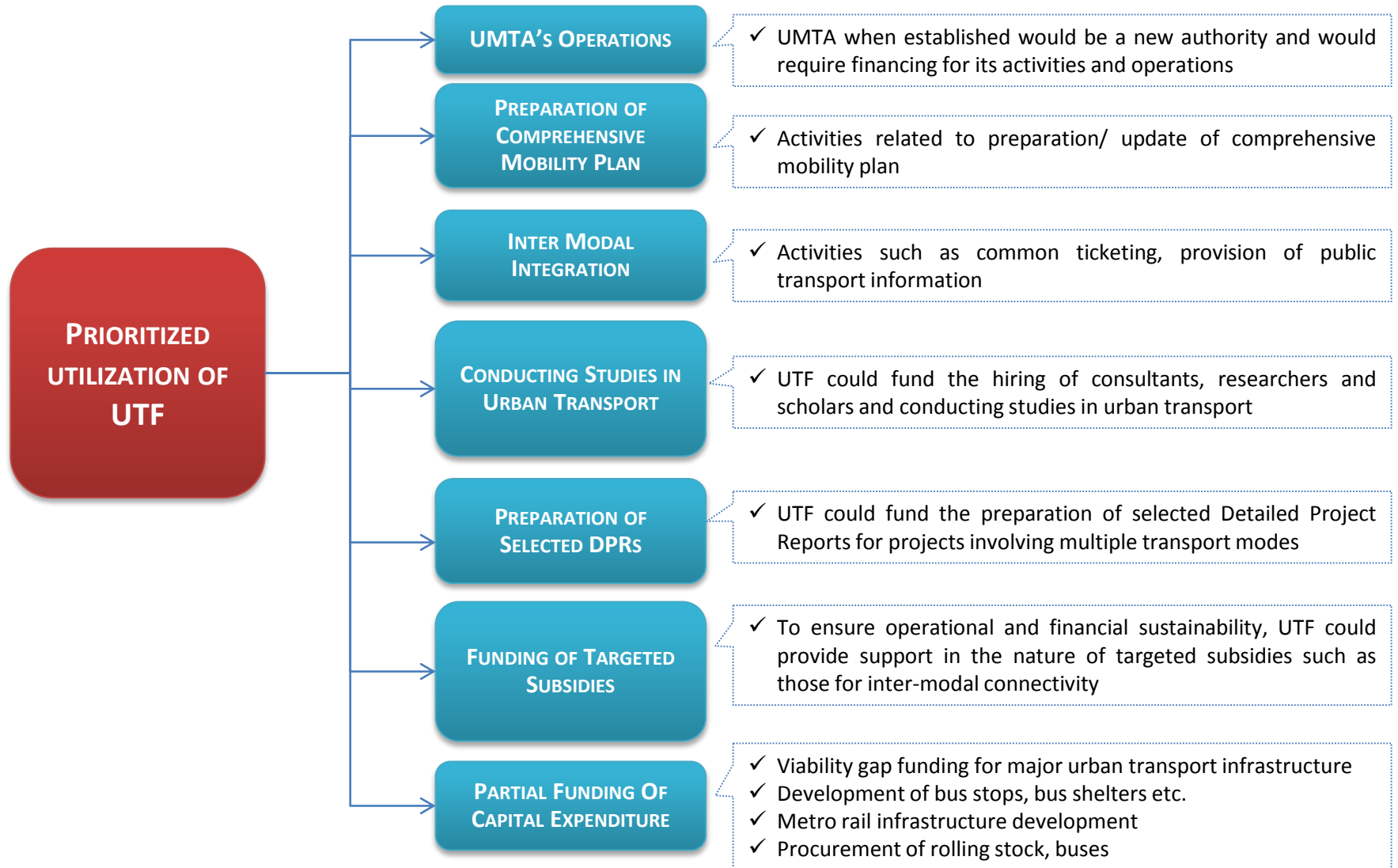
PARAMETERS



A MIX OF CONVENTIONAL AND INNOVATIVE FUNDING SOURCES HAVE BEEN IDENTIFIED FOR UTF



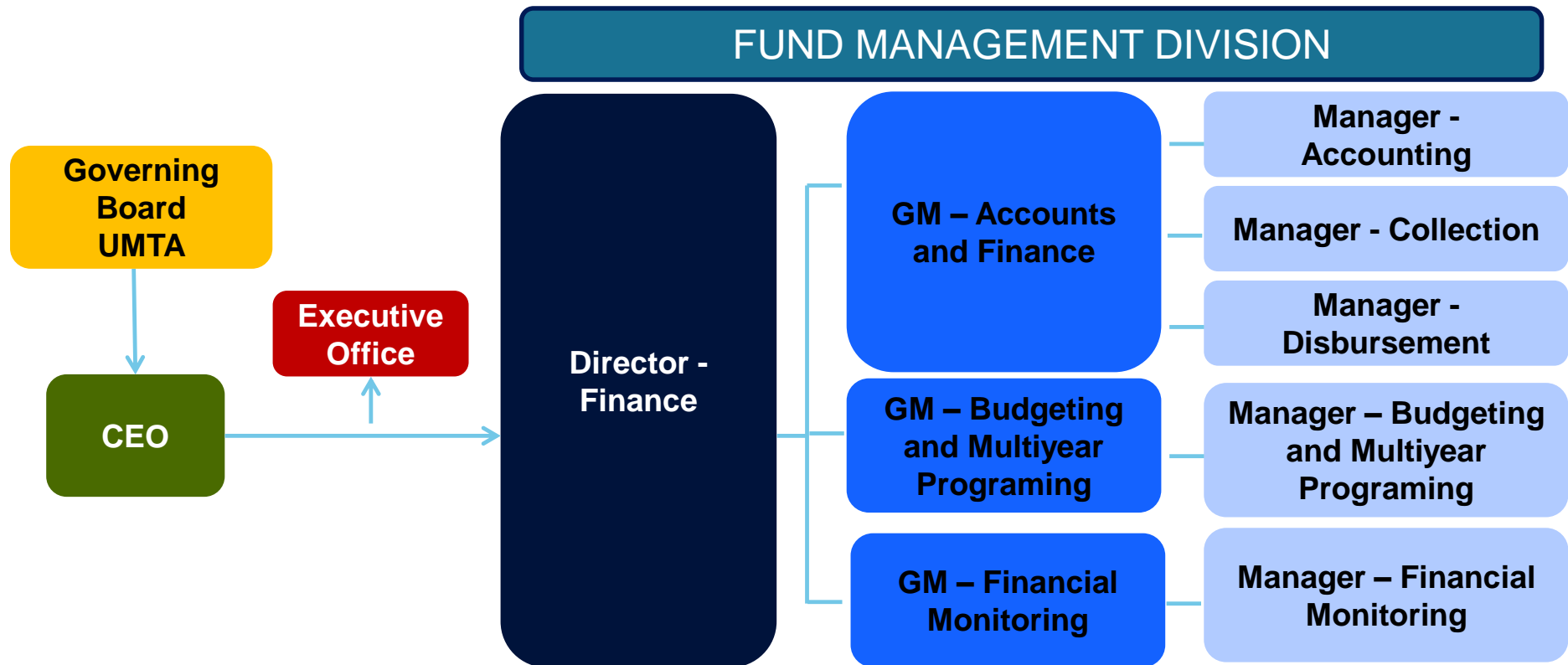
UTF FUNDS ARE PROPOSED TO BE UTILIZED EXCLUSIVELY FOR FUNDING URBAN TRANSPORT NEEDS IN THE URBAN AREA



All cities have accepted the proposed utilization avenues for UTF funds

FUND MANAGEMENT DIVISION

- Dedicated division for management of UTF, to perform the following broad functions:
 - Collection & disbursement of funds
 - Treasury management
 - Accounting & budgeting
 - Monitoring of UTF expenditure



All cities have accepted the proposed structure of FMD



Deloitte refers to one or more of Deloitte Touche Tohmatsu Limited, a UK private company limited by guarantee, and its network of member firms, each of which is a legally separate and independent entity. Please see www.deloitte.com/about for a detailed description of the legal structure of Deloitte Touche Tohmatsu Limited and its member firms.

Deloitte provides audit, tax, consulting, and financial advisory services to public and private clients spanning multiple industries. With a globally connected network of member firms in 140 countries, Deloitte brings world-class capabilities and deep local expertise to help clients succeed wherever they operate. Deloitte's 165,000 professionals are committed to becoming the standard of excellence.

Deloitte's professionals are unified by a collaborative culture that fosters integrity, outstanding value to markets and clients, commitment to each other, and strength from cultural diversity. They enjoy an environment of continuous learning, challenging experiences, and enriching career opportunities. Deloitte's professionals are dedicated to strengthening corporate responsibility, building public trust, and making a positive impact in their communities.

Copyright © 2016 Deloitte Touche Tohmatsu India LLP. All rights reserved. Member of Deloitte Touche Tohmatsu.